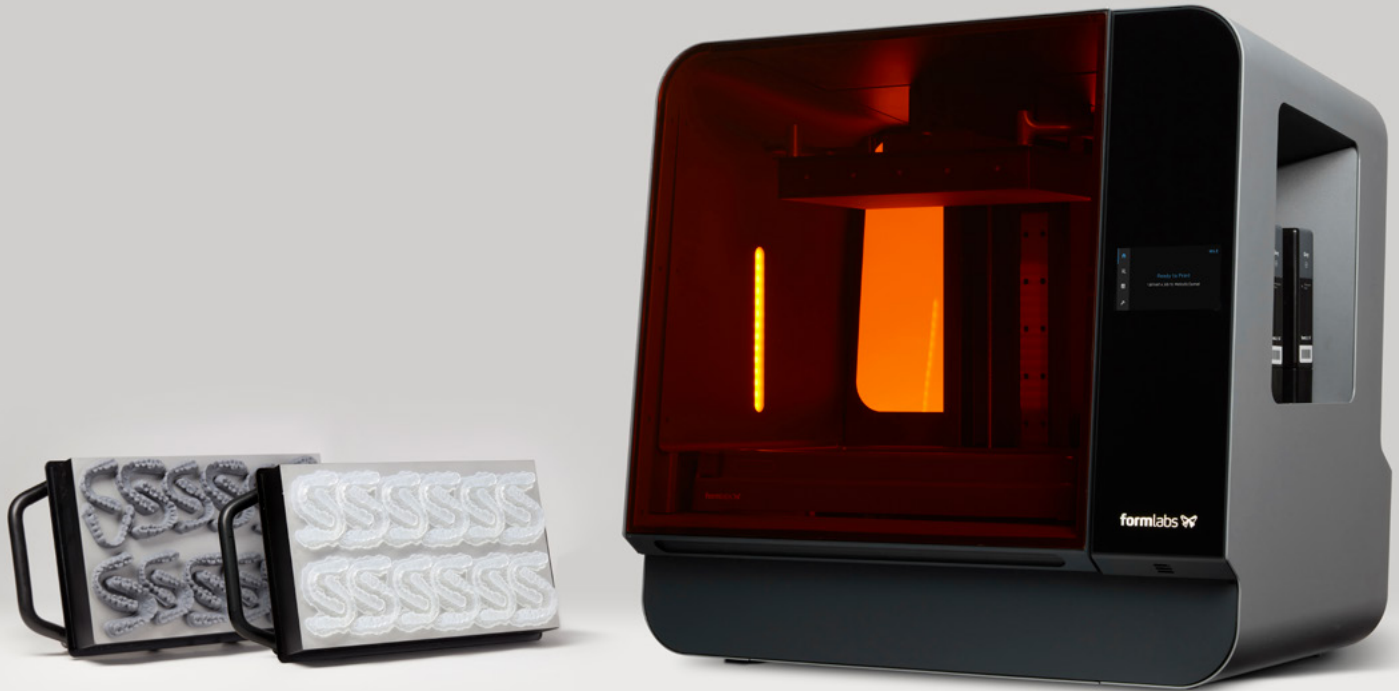


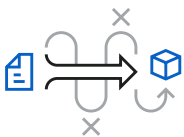
# Form 3BL

The New Standard for High Volume Dental 3D Printing

# Maximum Productivity, Minimum Intervention

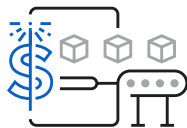


With a large build volume of 33.5 × 20 × 30 cm (13.2 × 7.9 × 11.8 in), the Form 3BL is ideal for dental labs looking for a robust, production-ready printer built on tried and tested Formlabs Dental technology.



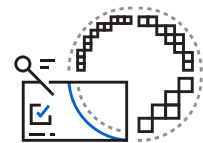
## DESIGNED FOR NONSTOP THROUGHPUT.

The Form 3BL is thoughtfully designed to maintain ideal print conditions with minimal operator intervention.



## LARGE VOLUME, AT A LOWER COST.

Dental 3D printers with comparable build volumes typically come with a six-figure price tag. The Form 3BL, with everything you need to start printing and a one-year Dental Service Plan, can be yours at an unprecedented value.



## PERFECTIONISM THAT SCALES.

Two precision Light Processing Units (LPU) inside the printer achieve consistent accuracy and detail across the two halves of the build platform.

# Validated Indications for High Accuracy

Each dental indication for the Form 3BL passes through a thorough validation process by our dental team to meet the accuracy requirements for dental production.

## Orthodontic Models

Produce orthodontic models for clear aligners and retainers at scale.

### CAPACITY ON THE FORM 3BL

- Up to 24 models per print in ~2.5 hours and over 95 models in an 8-hour day, including an overnight print, with only four interactions at 200 microns layer height settings.
- Print up to 52 models vertically in one build platform at 100 microns layer height settings (coming soon).



Printed using Draft Resin at 100 microns (left) and 200 microns (right) layer height, the technology behind the Form 3BL produces smooth and refined orthodontic models. The appliances made from these models are of the highest quality and have optimal fit.

## Surgical Guides

Produce accurate and affordable surgical guides in-house.

### CAPACITY ON THE FORM 3BL

- 24 guides (14 full arches and 10 quad surgical guides) per print in ~7.5 hours, overnight, with only one interaction.



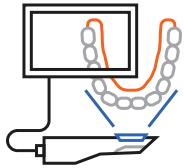
Other indications like splints, occlusal guards, maxillofacial models, custom impression trays, and more are coming soon. To access our full range of indications now, choose the Form 3BL desktop 3D printer.

# A Robust 3D Printing Ecosystem

The Form 3BL works full time so you don't have to. Free, easy-to-use nesting software and automated post-processing options make custom manufacturing easy.



1.



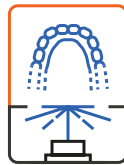
SCAN

2.



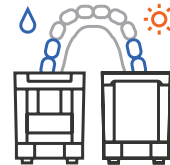
DESIGN

3.



PRINT

4.



POST-PROCESS

5.



DELIVER

## Designed for Nonstop Throughput

The Form 3BL is thoughtfully designed to maintain ideal print conditions with minimal operator intervention.

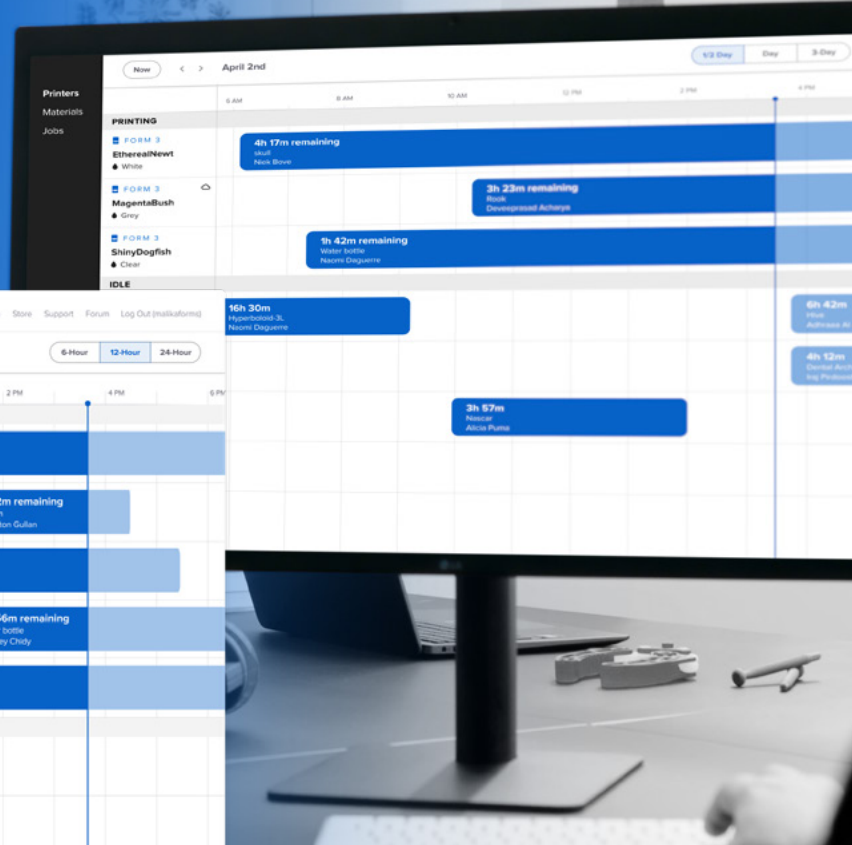
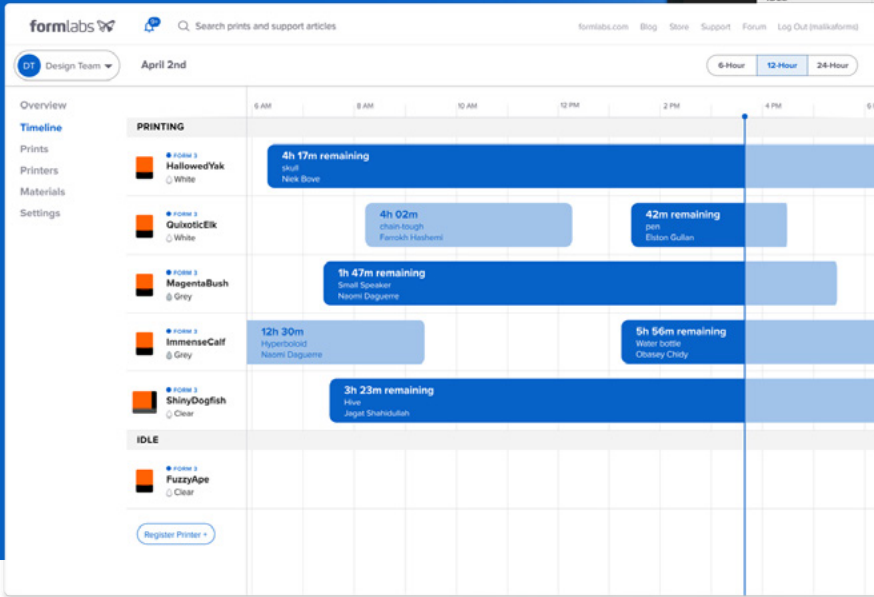
Remotely monitor and inspect your fleet of printers with the online Dashboard.

The Light Processing Units, rollers, and optics window can be replaced in-house, with no external technician required, so you don't have to wait for a replacement printer if something goes wrong.

A screenshot of the Formlabs dashboard interface. The dashboard is titled "West Wing Printers" and displays a list of active printers. The interface includes a sidebar with navigation options like "Dashboard", "Overview", "Timeline", "Jobs", "Printers", "Materials", and "Statistics". The main content area shows a list of printers with their status, material, and job details. Two printers are shown: "SlowCow" (Printing) and "FantasticKangaroo" (Error). The "SlowCow" printer is currently printing a "Draft V1" job, and the "FantasticKangaroo" printer has a "Job Paused. Cartridge Empty" error. The dashboard also includes filters for users, printers, materials, and outcomes, as well as a date range selector for "Sept 1 - Sept 30 2020".

# Built for Teams

Plan and manage your print queue in PreForm and manage printers and teams through your online Dashboard.

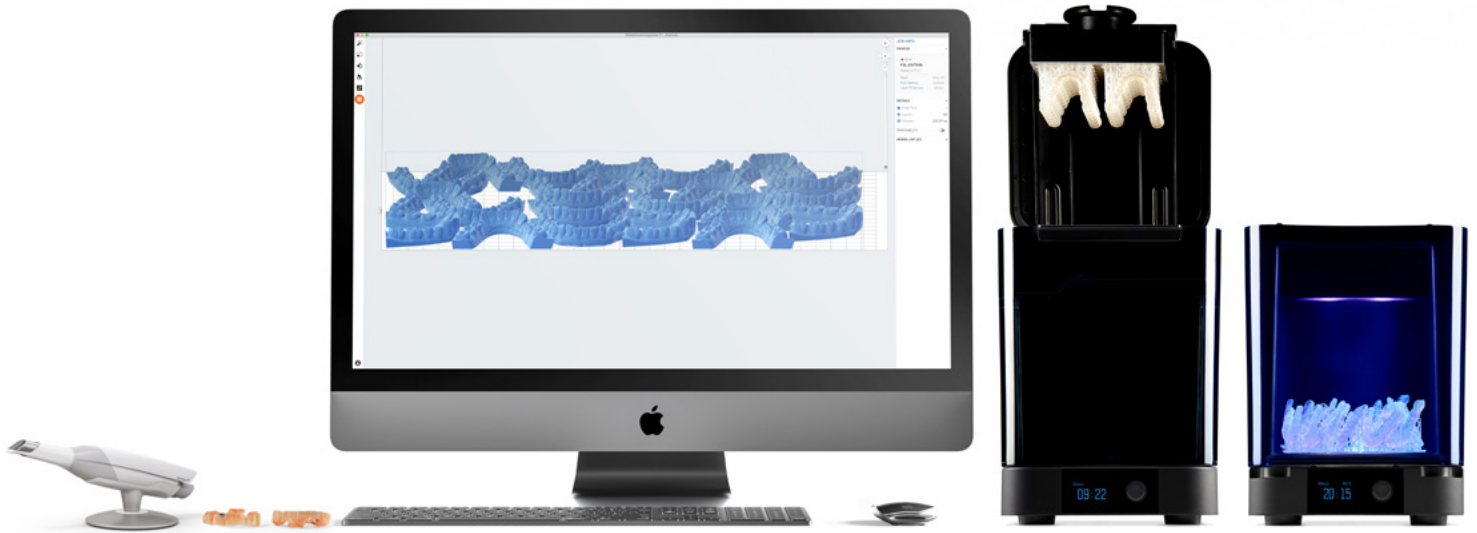


## The Perfect Finish

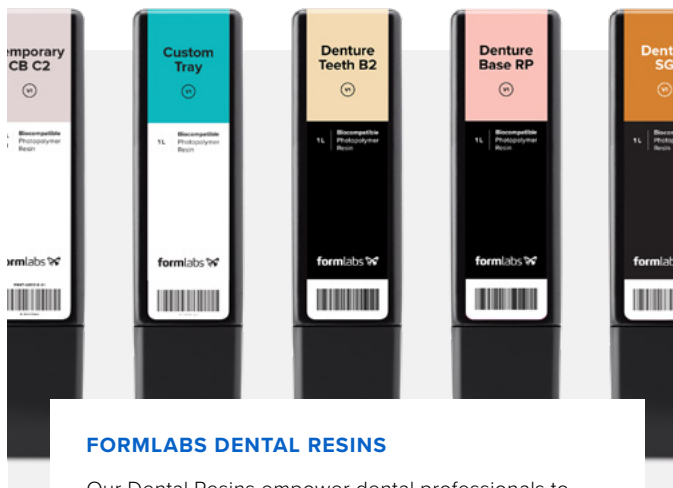
Form Wash and Form Cure streamline post-processing so you can consistently produce quality results with less time and effort.



# Part of the Formlabs Dental Ecosystem

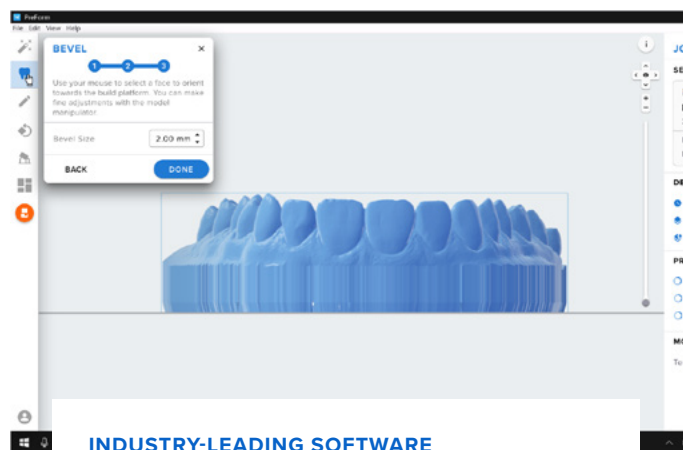


The Form 3BL is designed to integrate with existing dental workflows and Formlabs Dental products as seamlessly as possible, so you can quickly adapt to high volume dental 3D printing.



## FORMLABS DENTAL RESINS

Our Dental Resins empower dental professionals to rapidly manufacture aligner models, surgical guides, and other indications. The Form 3BL uses the same resin cartridges as the Form 2 and Form 3B, but is designed to hold two cartridges at once to account for the larger print volume.



## INDUSTRY-LEADING SOFTWARE

Tested over millions of prints, PreForm automatically suggests optimal orientation, supports, and layout to save time during print setup.

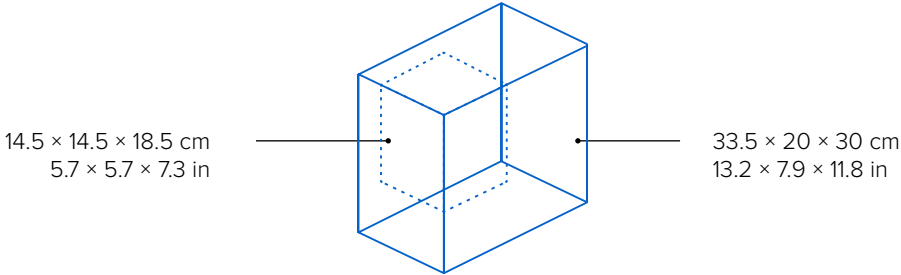
# Compare Formlabs Dental 3D Printers



**Form 3B**



**Form 3BL**

<p><b>BUILD VOLUME</b> (W x D x H)</p>		
<p><b>XY RESOLUTION</b></p>	<p>25 microns</p>	<p>25 microns</p>
<p><b>BIOCOMPATIBLE MATERIALS</b></p>	<p>✓</p>	<p>✓</p>
<p><b>LASER POWER</b></p>	<p>1x 250 mW laser</p>	<p>2x 250 mW laser</p>
<p><b>WEIGHT</b></p>	<p>17.5 kg 38.5 lbs</p>	<p>54.4 kg 120 lbs</p>
<p><b>PRINTER DIMENSIONS</b> (W x D x H)</p>	<p>40.5 x 37.5 x 53 cm 15.9 x 14.8 x 20.9 in</p>	<p>77 x 52 x 74 cm 30.3 x 20.5 x 29.1 in</p>

## THE FORM 3B IS IDEAL FOR

- Dental and orthodontic labs and practices
- Manufacturing any of our validated indications
- Multiple quick prints per day
- Printing a single part or smaller batches
- Switching between indications or printing multiple different indications concurrently on multiple printers

## THE FORM 3BL IS IDEAL FOR

- Dental and orthodontic labs
- Manufacturing aligner models, occlusal guards, maxillofacial models, surgical guides, splints (soon), custom impression trays (soon)
- Minimum user interactions
- Printing large batches of parts
- Printing the same indication continuously



## The Form 3BL Basic Package

Scale up your production with our robust and dependable large-format dental 3D printer, the Form 3BL. The Basic Package includes the essential tools required to start printing high-quality dental parts and biocompatible appliances.

### INCLUDES

- 1 Form 3BL 3D Printer
- 1 Resin Tank
- 1 Build Platform
- 1 Finish Kit  
(Rinse Bucket and Cleaning Tools)
- Dental Service Plan (DSP)
- PreForm Software

## Accessories

### Form 3BL Build Platform

Spare build platforms speed up your workflow and allow for nonstop printing, for example, starting a new print while post-processing your previous part. The Form 3BL build platform holds full-size prints and has two side handles to easily transport your printed part.



### Form 3BL Resin Tank

Low Force Stereolithography (LFS)<sup>™</sup> 3D printing uses linear illumination and a flexible film tank to turn liquid resin into flawless parts. A key component of the LFS process, the strong dual-layer film at the bottom of the Form 3BL Resin Tank allows for a dynamic and precise print process, scaled up for high volume printing. Each resin tank includes a mixer and is designed to block extraneous UV light and allow for easy stacking.

Formlabs Dental recommends purchasing one tank for each material you are planning to use, understanding that unused resin can be stored in the tank in between use. Tanks wear over time and are considered consumables. Tank lifetime depends on which resin is being used.







## Premium 3D Printing Support, Made For Dental

Behind Formlabs Dental is a dedicated team of certified Dental Support Specialists who know exactly how to help when you need it. Premium support is available for one, two, or three years, designed to meet your needs and bring you extra peace of mind.

### INCLUDES

#### Priority Access to Certified Dental Agent

A direct line to a Certified Dental Agent and prioritized email support from our dedicated staff.

#### Customized Training

A training session over video with a Certified Dental Agent, customized to you.

#### Hot Swaps for Hardware Replacements

Ensure constant uptime: Formlabs Dental will ship you a replacement printer to keep you printing if your printer needs to be repaired or replaced.

#### Warranty for the Duration of the Plan

The Dental Service Plan extends the one-year warranty included with your printer to the full duration of the chosen plan.

# Trusted by Dental Industry Leaders

With 75+ support and service staff and 150+ engineers, Formlabs Dental backs its products with the strongest team in 3D printing.



## Get Started Now.

Formlabs Dental 3D printers are ready to plug and print right out of the box, no specialized training required.